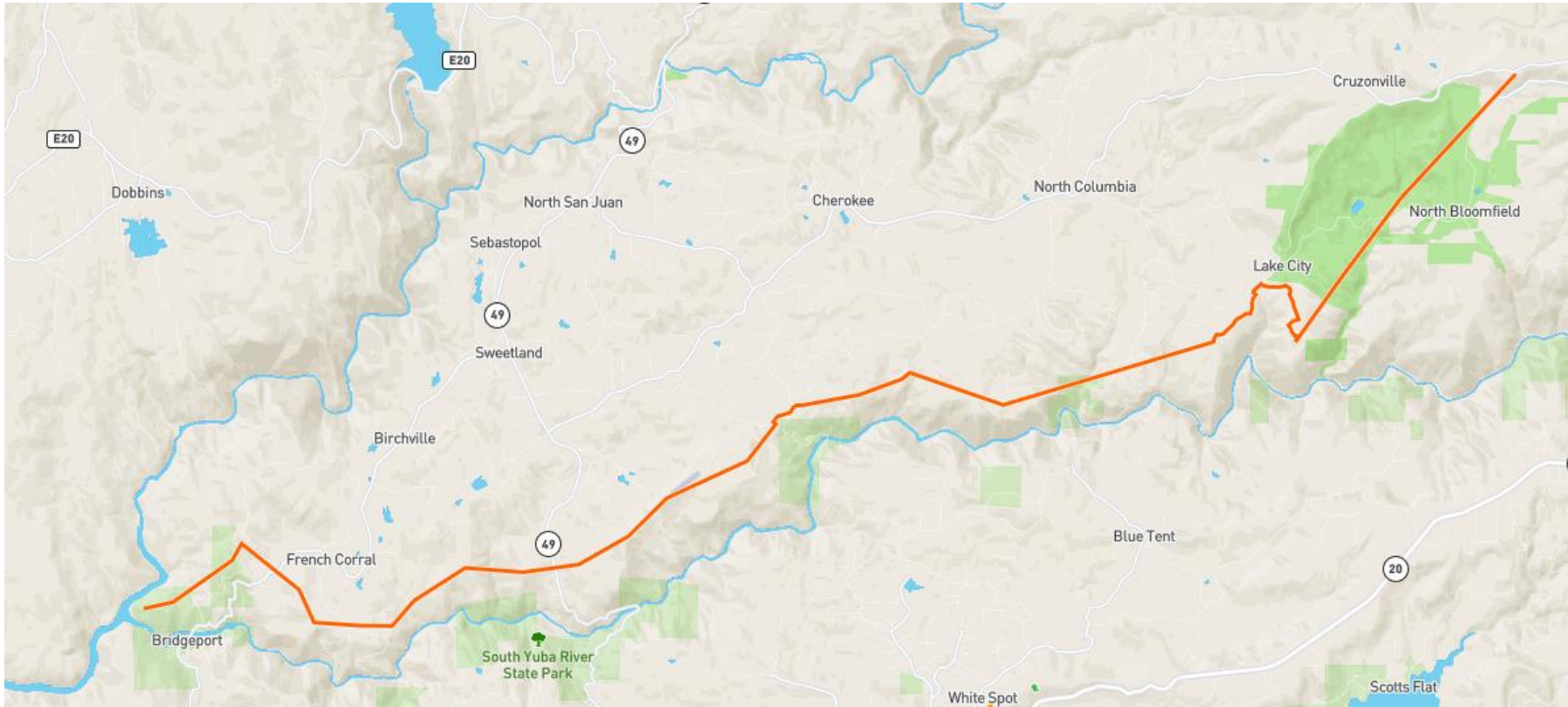




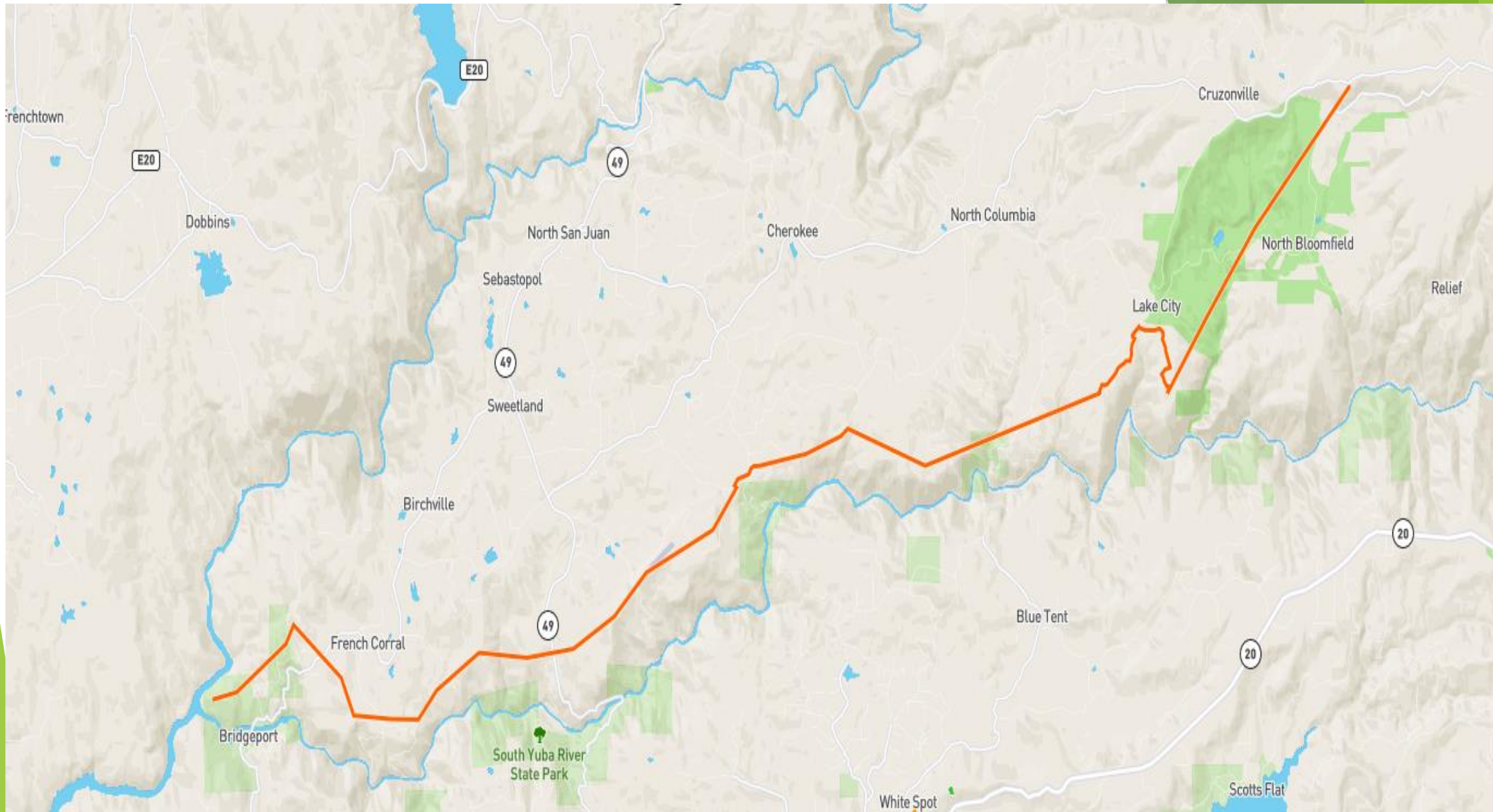
# South Yuba Rim Fuel Break

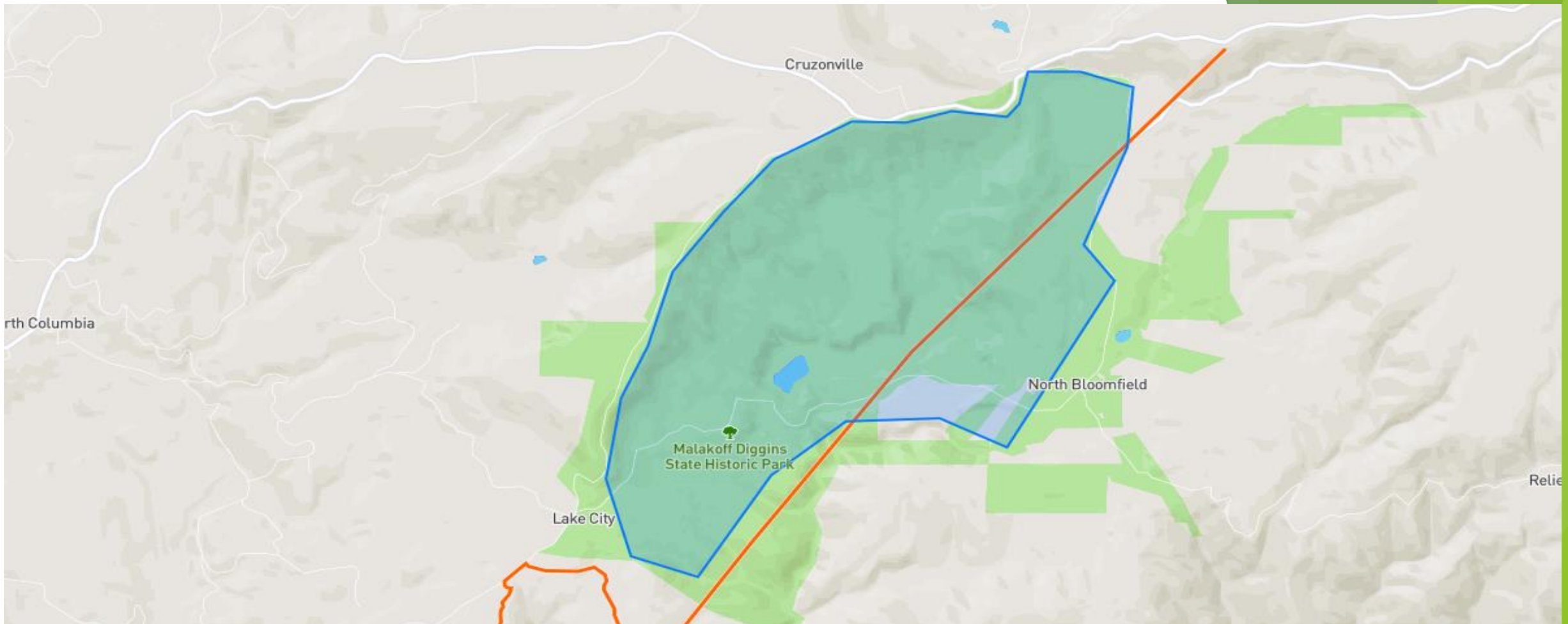




## South Yuba Rim Fuel Break

A Landscape scale fuel break concept, spanning 21 miles of the Northern rim of the South Yuba River.

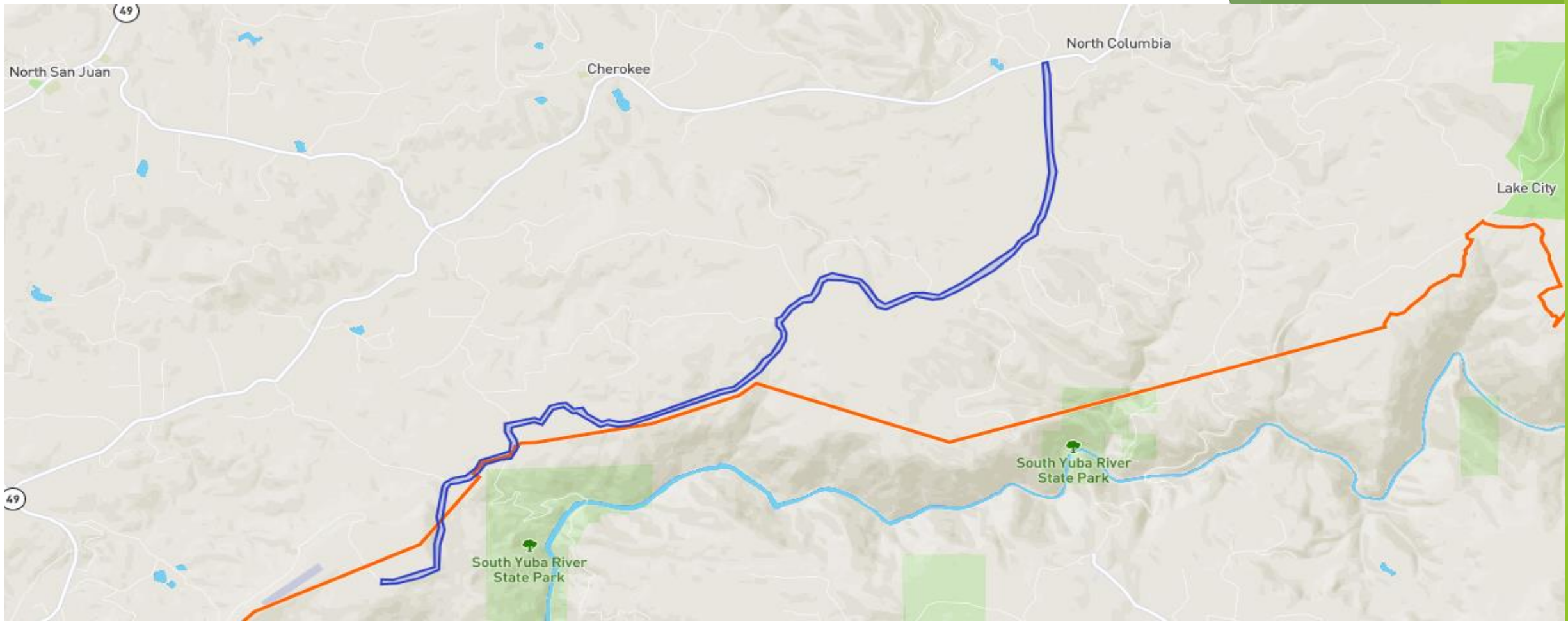




## South Yuba Rim Fuel Break

Malakoff State Park VMP

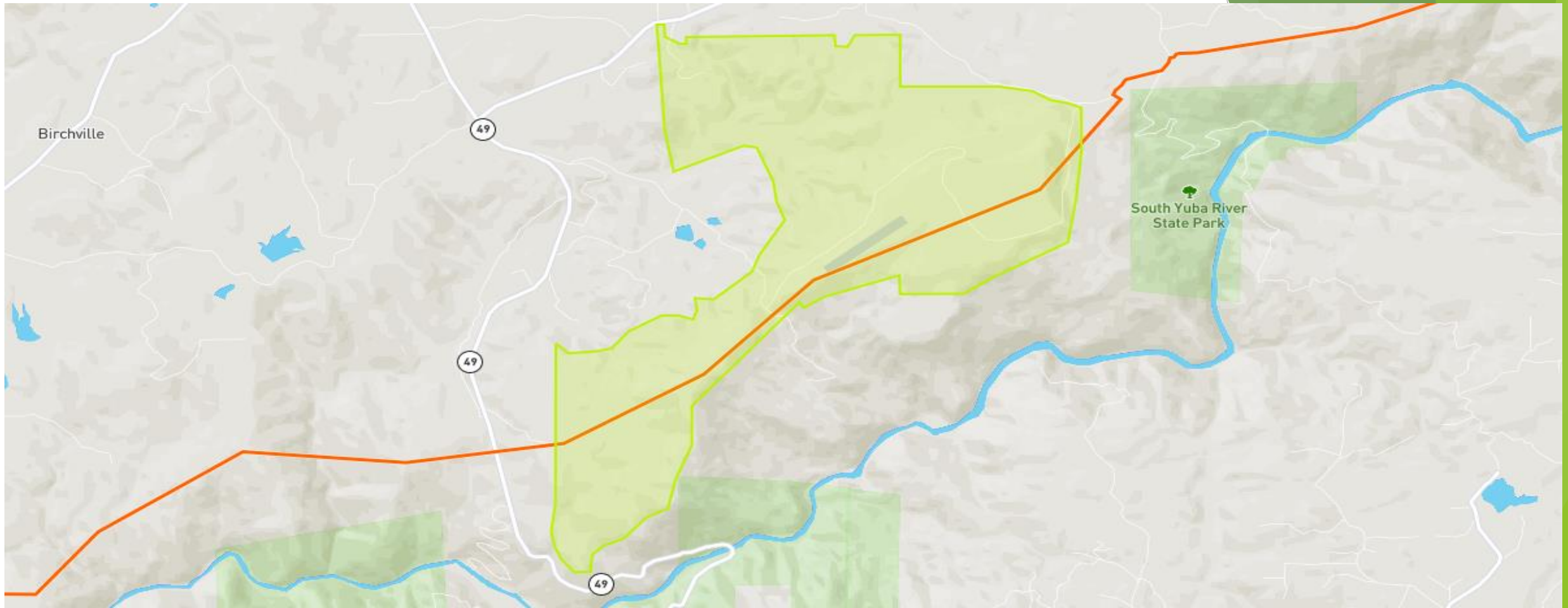
Approximately 2100 acres



## South Yuba Rim Fuel Break

Montezuma Fuel Break

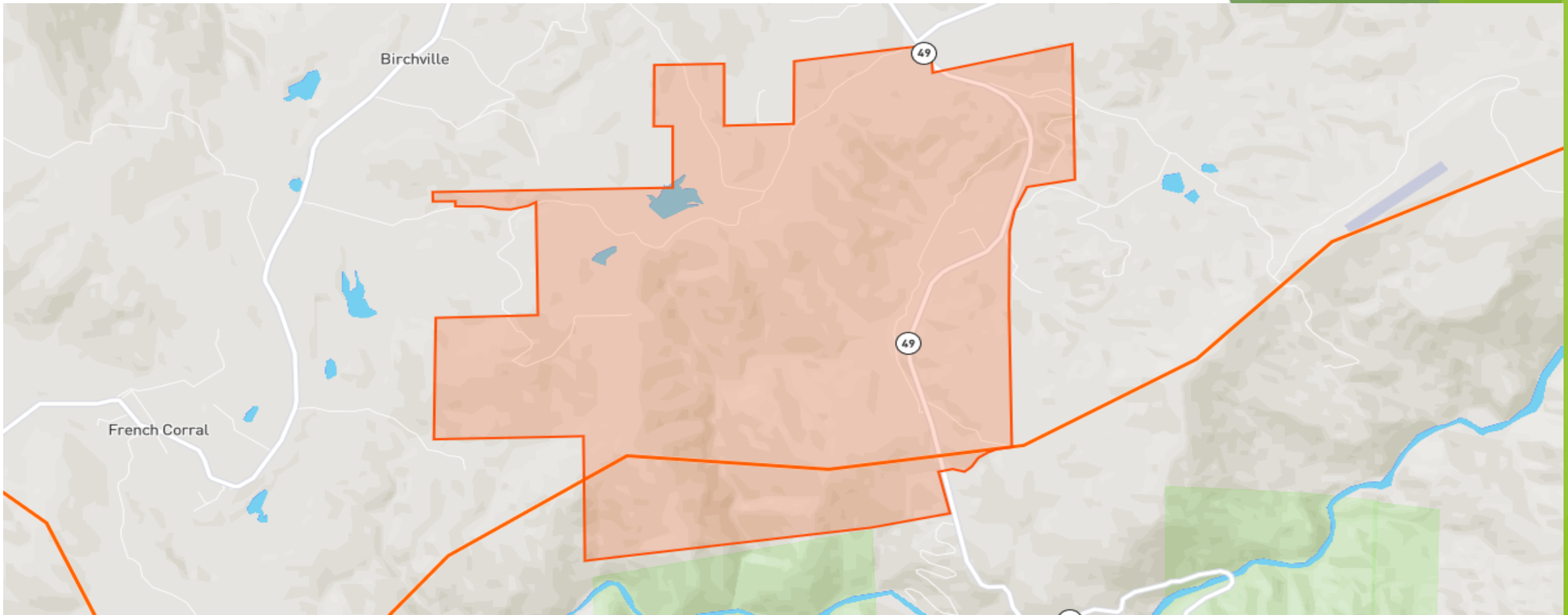
Approximately 13 miles of road side fuel reduction



## South Yuba Rim Fuel Break

Bunker Hill VMP

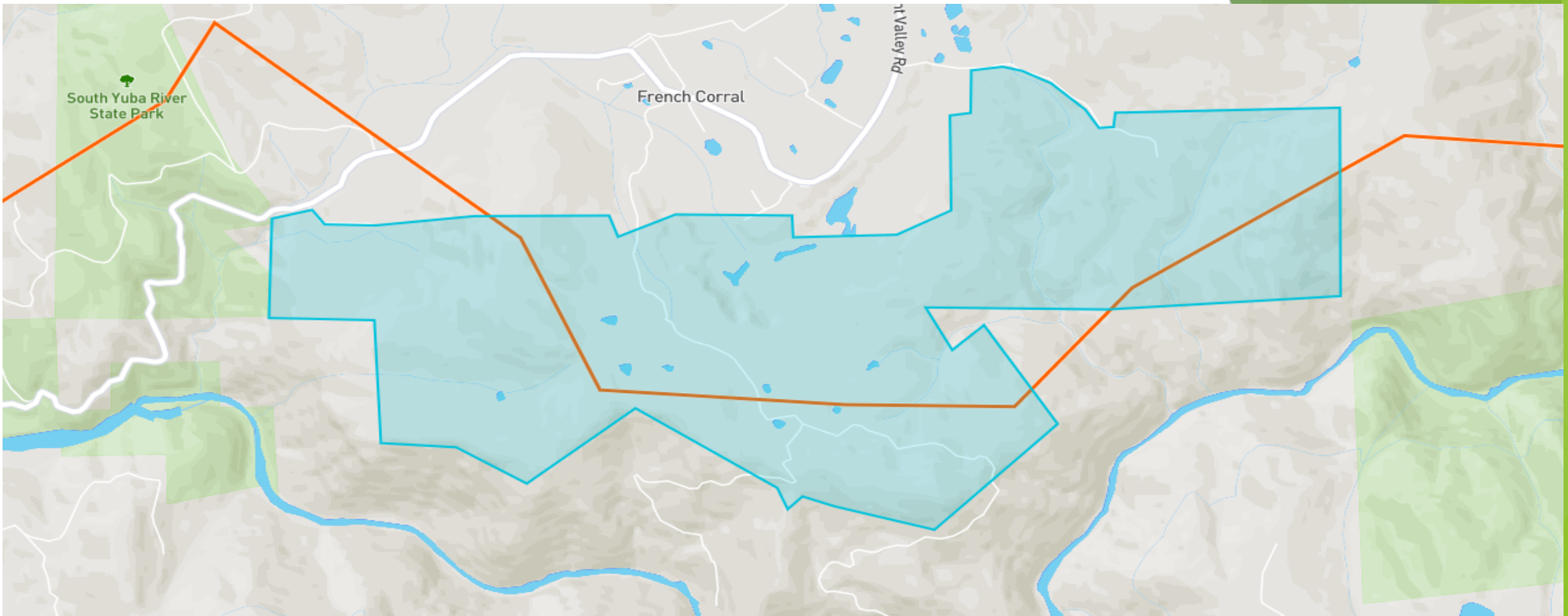
Approximately 1500 acres



## South Yuba Rim Fuel Break

Reader VMP

Approximately 2000 acres

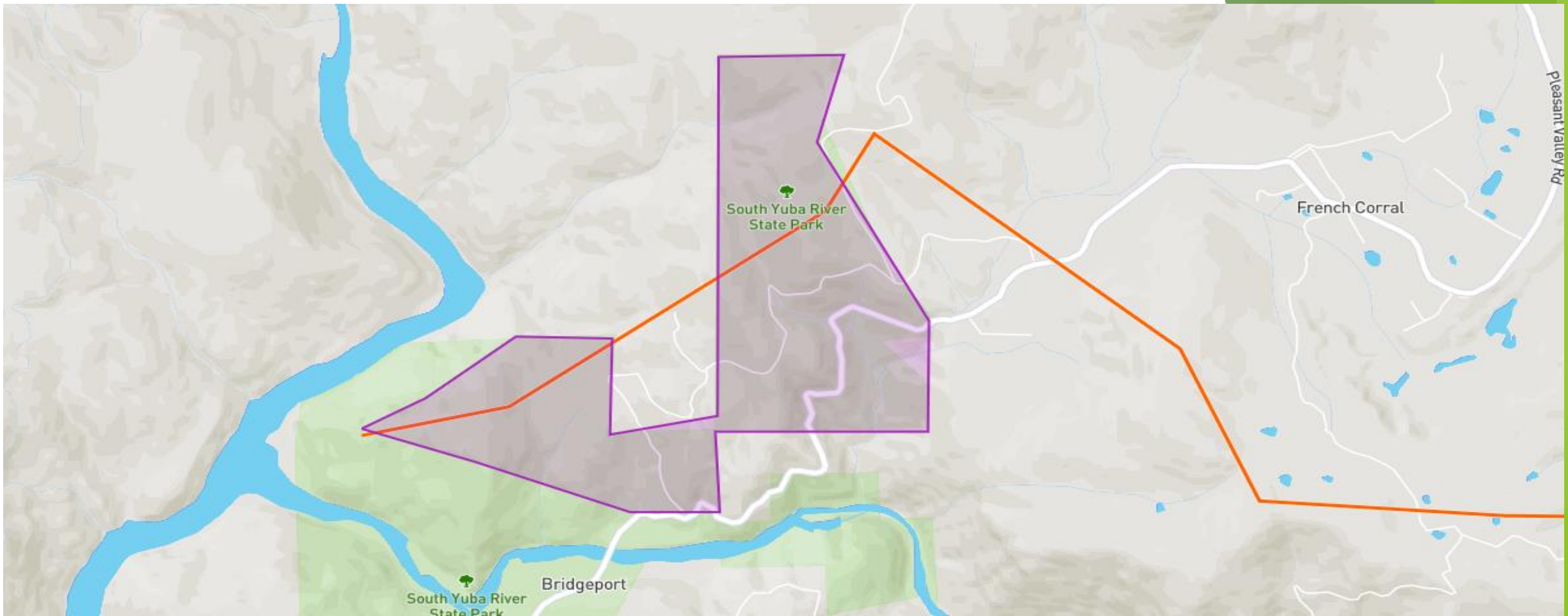


## South Yuba Rim Fuel Break

Birchville / French Corral VMP

Approximately 1000 acres

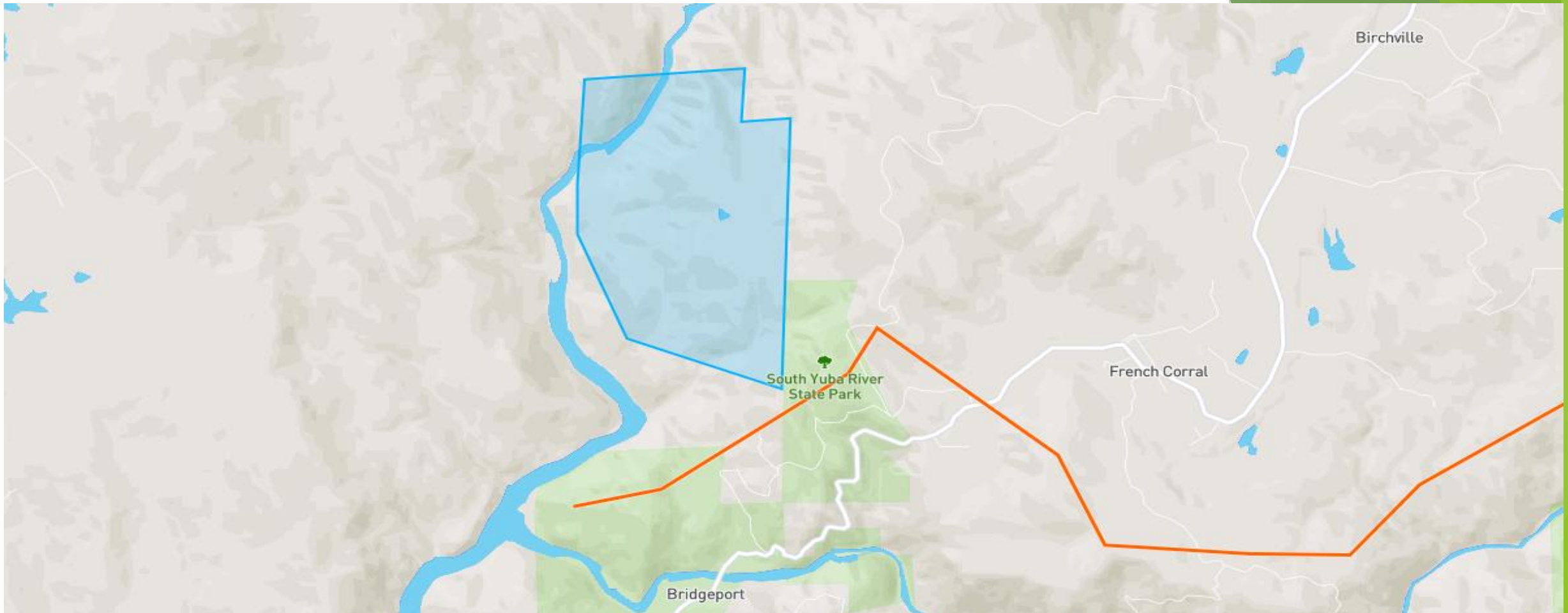




## South Yuba Rim Fuel Break

Bridgeport VMP

Approximately 370 acres



## South Yuba Rim Fuel Break

Bear Yuba Land Trust / Rice's Crossing

Approximately 600 acres

# South Yuba Rim Fuel Break

