

# Yuba Watershed Resilience Program: Yuba Foothills Healthy Forest CCI Grant Update

Introduction: Joanna Lessard, Yuba Water Agency,  
Project Manager ([jlessard@yubawater.org](mailto:jlessard@yubawater.org) )

My Key Roles at the Agency Include:

- Water Resources Team Member  
(supporting wide variety of programs/projects)
- Yuba Water Grant Program Co-administrator  
and Technical Team Member
- Yuba IRWM Program Lead
- **Watershed Resilience Program Lead**



# Yuba Water Agency Watershed Resilience Program

## Projects Supported under this Program:

- I. Yuba Fire Safe Council
- II. **Yuba Foothills Healthy Forest Grant (CalFire CCI Funded)\***
- III. Camptonville Community Partnership Biofuel Plant and Business Center
- IV. Resilience Bond development for Mine Remediation and Meadow Restoration Grant with The Sierra Fund
- V. North Yuba Forest Partnership
  - I. Yuba Project Forest Resilience Bond
  - II. Trapper Project Forest Resilience Bond





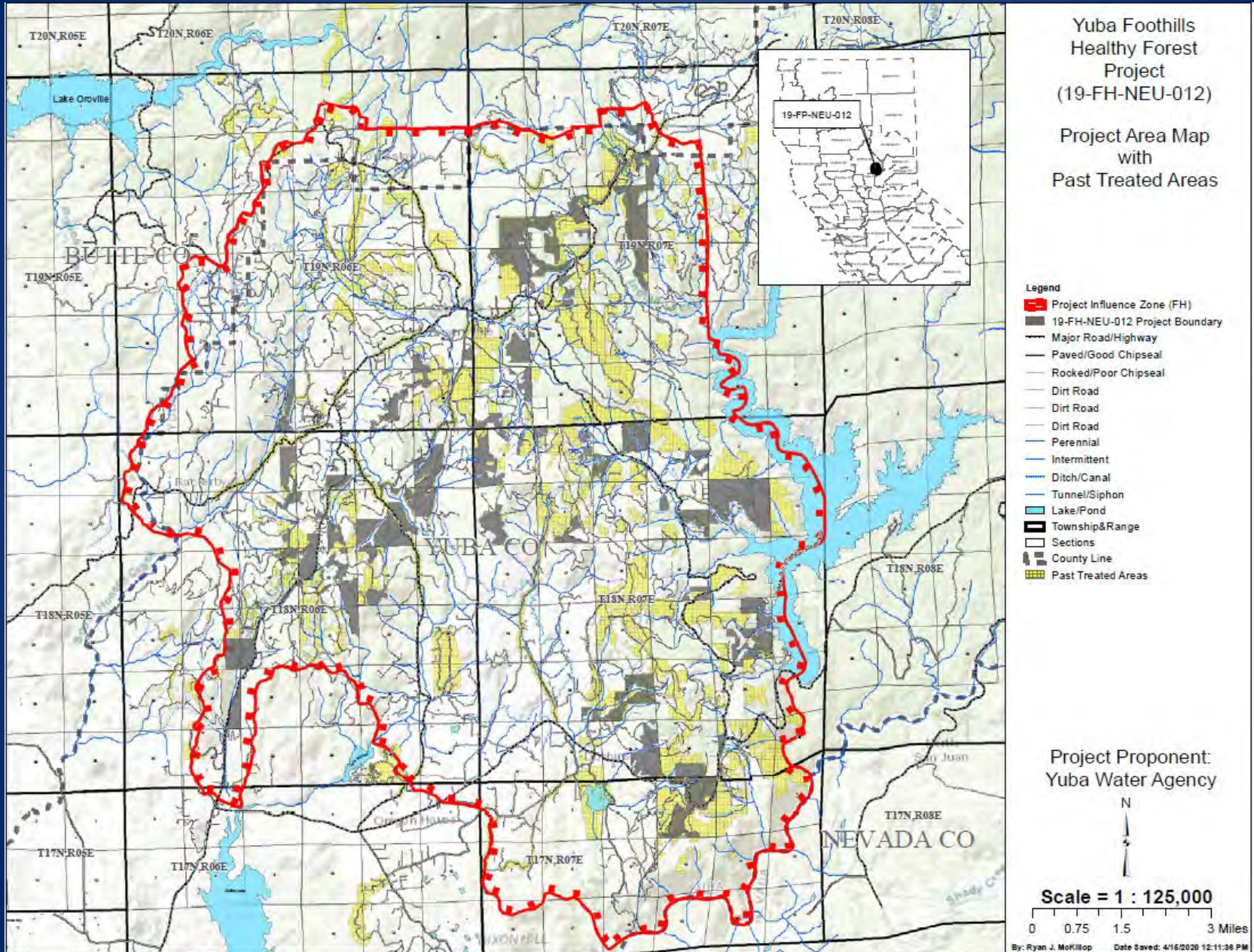
# Yuba Foothills Healthy Forest Grant

Cal-Fire Awarded the Yuba Water Agency a **\$4.5 million grant** from the California Climate Investments Department of Forestry and Fire Protection Forest Health Program

- Forest health and fire risk reduction treatments on **5,400 acres in the Yuba County foothills**
- Partners include Plumas NF, Private Timber Companies, Boy Scouts and Yuba Water



The Project Influence Zone includes 71,244 acres and an estimated 2,721 structures at high risk for wildfire



| Project Treatments                | Boy Scouts | CHY     | Doner   | Ingersoll | Sillers | SPI    | USFS   | YWA     | Totals by Trt |
|-----------------------------------|------------|---------|---------|-----------|---------|--------|--------|---------|---------------|
| Partner Types                     | Non-Ind    | Non-Ind | Non-Ind | Non-Ind   | Non-Ind | Ind    | FS     | Non-Ind |               |
| Biomass (B) Chip                  |            | 911.2   | 14.1    | 124.3     |         | 216    |        |         | 1265.6        |
| Biomass/Burn                      |            |         |         |           |         |        | 325.5  |         | 325.5         |
| BiomassChip/Herbicide             |            | 287.6   | 3.1     |           | 336.5   | 604.6  |        | 3.1     | 1234.9        |
| Biomass Chip/Herbicide/Plant      |            |         |         |           |         | 11.2   |        |         | 11.2          |
| Biomass Chip/Underburn            |            |         |         |           |         | 67.0   |        |         | 67.0          |
| Hand-cut/Pile/Burn                |            |         |         | 4.6       |         | 3.6    | 110.7  |         | 118.9         |
| Hand-cut/Pile/Burn/Herbicide      |            |         |         |           |         |        |        |         | 20.3          |
| Extreme Mastication (EM)          |            |         |         | 38.9      |         |        |        |         | 38.9          |
| EM/Herbicide                      | 6.1        | 55.3    |         |           |         |        |        |         | 61.4          |
| EM/Herbicide/Plant                |            | 64.1    |         |           |         |        |        | 6.3     | 70.4          |
| Heavy Mastication                 |            | 22.2    |         | 192.9     |         |        | 538.1  |         | 753.2         |
| Heavy Mastication/Herbicide       |            | 24.1    |         |           | 285.1   | 154.2  |        |         | 463.4         |
| Heavy Mastication/Herbicide/Plant |            |         |         |           |         | 33.8   |        |         | 33.8          |
| Herbicide                         |            |         |         |           | 136.7   | 185.0  |        |         | 456.3         |
| Herbicide/Plant                   |            |         |         |           |         | .9     |        |         | .9            |
| Light Mastication                 |            | 86.1    |         | 30.3      |         | 6.7    | 14.9   |         | 138.0         |
| Light Mastication/Herbicide       |            | 59.1    |         |           |         | 128.1  |        |         | 187.2         |
| Underburn                         |            |         |         |           |         | 33.8   |        |         | 33.8          |
| Pre-commercial Thin (PCT)         |            | 157     |         |           | 37.5    |        |        |         | 194.5         |
| PCT/Herbicide                     |            |         |         |           |         | 4.7    |        |         | 4.7           |
| Tractor Pile/Burn/Plant           |            |         |         | 85.2      |         |        |        |         | 85.2          |
| Road Maintenance                  |            |         |         |           |         |        | 22.5   |         | 22.5          |
| Total Acres Treated               | 6.1        | 1,666.7 | 17.2    | 476.1     | 795.8   | 1449.6 | 1011.7 | 9.4     | 5,587.6       |

# Accomplishments

- Completed CEQA using the CalVTP checklist document (first in the state)
- Treatments Completed (1901 acres so far):
  - biomass chipping operations on 1654 acres
  - Pre-commercial thinning on 137 acres
  - Light Mastication on 65 acres
  - Heavy/Extreme Mastication on 45 acres
  - **Total Acres Treated to Date: 1901 acres**
- Road signs are being put up and will be moved as treatments are implemented this spring



# Soper-Wheeler Pre/Post Photo Examples from fall 2020 Treatments

Soper Company – 19FH-NEU-012, Pre & Post chipping Photo-points for Invoice#01, 11/25/2020



S22.1 – Pre-chip tr



S22.1 – Post chip

Soper Company – 19FH-NEU-012, Pre & Post chipping Photo-points for Invoice#01, 11/25/2020



S20 – Pre-chip tr



S20 – Post chip

# Ingersoll Pre/Post Photo Examples from 2021 Treatments

## Before and After Mastication North Side of Marysville Road





# CHY Pre/Post Photo Examples from 2021 Treatments

## Before and After Biomass Thinning on Indiana Ranch



# Next Steps

- Completion of treatments on CHY, Ingersoll and SPI land
- Start treatments on Plumas NF Land, Sillers, Donor, Boy Scouts and Yuba Water Parcels
- Track benefits from the grant in terms of fire risk reduction, forest health and job creation (where applicable)
- Continue to work with regional partners on new collaborative projects
- Watershed Resilience Program projects **are eligible for the Yuba Water Community Impact Grant and Loan Program** (cost share requests for external grants like this one can be brought to the grant program at any time)



# Thank you! Questions?

## For More Information Please see:

- Yuba Water's Grant Policy:  
<https://www.yubawater.org/342/Community-Impact-Grant-and-Loan-Program->
- Yuba Water Agency's Watershed Resilience Program:  
<https://www.yubawater.org/255/Forest-Health-and-Watershed-Protection>
- Contact: Joanna Lessard, [jlessard@yubawater.org](mailto:jlessard@yubawater.org)