

Project Summary

The one-lane bridge over the South Yuba River at Edwards Crossing is categorized as Structurally Deficient and is load restricted, affecting emergency response and accessibility at the bridge.

With a feasibility study now complete that investigates rehabilitation and replacement options, Public Works is soliciting public input on the project alternatives before moving forward with project design and construction.

A town hall meeting will be held as follows:

6pm - 8pm

Wednesday, August 30, 2017

Board of Supervisors Chambers

Eric W. Rood Administrative Center

950 Maidu Avenue, Nevada City

The meeting will include a presentation by county staff. Following the presentation, residents and interested parties will have an opportunity to ask questions and voice support or concerns about the project alternatives. This feedback will assist Public Works in determining a preferred alternative moving forward.

For general project information please contact (530) 265-1411 or visit the County's Facebook page at www.facebook.com/nevcopwsocial.

County of Nevada
950 Maidu Avenue
Nevada City, CA 95959

TO:

Nevada County Department of Public Works

2020 Edwards Crossing Bridge Project



Town Hall Meeting

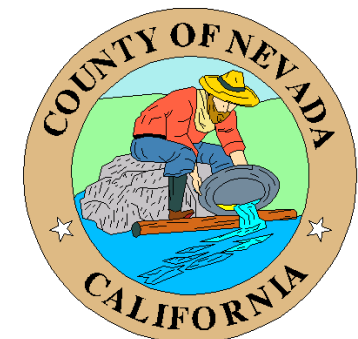
6 pm-8 pm

Wednesday, August 30, 2017

Board Chambers

Eric W. Rood Admin Center

950 Maidu Ave, Nevada City



Tel: (530) 265-1411

2020 Edwards Crossing Bridge Project

Background

The single-lane Edwards Crossing bridge carries traffic from North Bloomfield Road over the South Yuba River. It was constructed in 1904 and rehabilitated in 1989, and is located on land managed by the Bureau of Land Management. The bridge is eligible for listing on the National Register of Historic Places, and this segment of the South Yuba River is included in the State-designated California Wild and Scenic River System.

Project Need

The Edwards Crossing bridge is considered Structurally Deficient. The foundations have been partially undermined from river scour and the bridge is load restricted, affecting emergency response and accessibility at the bridge.

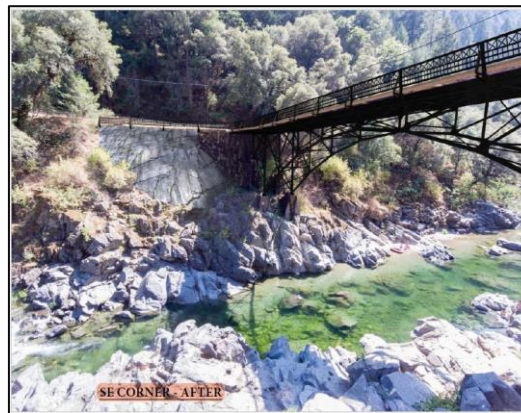


In response to the bridge's poor condition, Caltrans funded a feasibility study to investigate rehabilitation and replacement options.

Project Alternatives

The **bridge rehabilitation alternative** includes strengthening the existing bridge to allow additional vehicle loads, cleaning and repainting the bridge, replacing the bridge deck and railing, making improvements to the bridge approaches, and improving erosion issues at the abutments.

Bridge Rehabilitation Alternative
Sample rendering



The **bridge replacement alternative** would include the construction of a new 2-lane bridge, improvement of the alignment and approaches, and resolving erosion issues.

Bridge Replacement Alternative
Sample depiction (not actual design)



Town Hall Meeting

Public Works is soliciting public input on the project alternatives before moving forward with project design and construction. You are invited to participate in this process by attending the Town Hall meeting:

6 pm–8 pm • Wed, August 30, 2017
Board of Supervisors Chambers
Eric W. Rood Administrative Center
950 Maidu Avenue, Nevada City

The Town Hall meeting will include a presentation by county staff. Following the presentation, attendees will have an opportunity to ask questions and voice support or concerns about the project alternatives to assist Public Works in determining a preferred alternative.

Next Steps

After determining the project type, the county will prepare an environmental analysis of the project for release in summer 2018. Construction is tentatively scheduled for 2020.

For More Information

<http://dokkenbridges.com/nevada-county/edwards-crossing.html>

Joshua Pack, P.E.

Principal Civil Engineer
Nevada County Public Works Dept
950 Maidu Avenue
Nevada City, CA 95959
530-265-1411